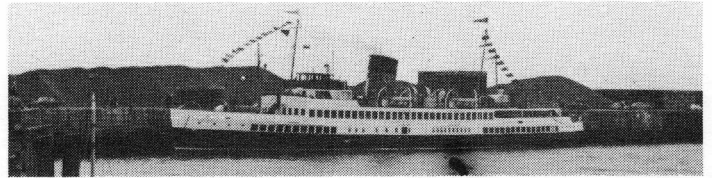




**CLYDE RIVER
STEAMER CLUB**



**Unique Excursion from Gourock, Wemyss Bay
and Largs with connections from Dunoon and
Rothesay to**

STRANRAER

● returning via **AILSA CRAIG**

by Turbine Steamer

QUEEN MARY II

on

Saturday 6th September, 1975

ITINERARY

Gourock	dep. 0900
Wemyss Bay	dep. 0940
Largs	dep. 1010
Stranraer	arr. 1410
Stranraer	dep. 1500
	via Ailsa Craig	
Largs	arr. 1940
Wemyss Bay	arr. 2010
Gourock	arr. 2045

CONNECTING SERVICES

BY RAIL (Outward):—

- 0800 Glasgow (Central) to Gourock
- 0835 Glasgow (Central) to Largs
- 0840 Glasgow (Central) to Wemyss Bay

Return (trains will not await arrival of steamer):—

- 1955 Largs to Glasgow (Central) arr. 2107
- 2046 Wemyss Bay to Glasgow (Central) arr. 2140
- 2105 Gourock to Glasgow (Central) arr. 2158

BY STEAMER (no extra charge):—

- 0800 Dunoon to Gourock
- 0900 Rothesay to Wemyss Bay
- 2100 Gourock to Dunoon
- 2030 Wemyss Bay to Rothesay

LUNCHEON (£1.25) and HIGH TEA (£1.10) will be served at times detailed below. Meal tickets should be obtained in advance.

EARLY BOOKING STRONGLY ADVISED

Bookings by POST ONLY from Mr E. J. SCHOFIELD, 82 Bonnyton Drive, Eaglesham, G76 0LU.

FARE £3.75 ONLY

£4.00 if booked on day of trip
OAP's (advance booking only) special fare of £3.00.
Schoolchildren—£2.00

CLYDE RIVER STEAMER CLUB—Excursion to Stranraer by T.S. QUEEN MARY II on Saturday, 6 September, 1975

To:—Mr E. J. SCHOFIELD, 82 Bonnyton Drive, Eaglesham G76 0LU.

I wish to make the following bookings for the above excursion and enclose a remittance for £
in favour of "Clyde River Steamer Club."

I ENCLOSE A STAMPED ADDRESSED ENVELOPE FOR REPLY.

	ADULT	O.A.P.	CHILD
Steamer Tickets from.....			
Luncheon Tickets*		X	